



Ref. No. MK1-25/478

Date October 8, 2025

Subject Disposal Service Report of Laboratory Waste

To Maejo University

According to Recycle Engineering Co., Ltd. provided the transportation and disposal service of Laboratory Waste for Maejo University on September 10, 2025 refer to manifest No.25/0171. This is the report of disposal process as shown below in the table, Flow chart of Chemical Process Diagram and figures.

Table : Summary weight of waste.

Type of Waste	Waste Management	Quantities (Kg.)
Mixed Solvent	Analysis of physical and chemical primary properties is then pre-treating, separating recyclable parts and transporting the collected sediment by cement or hazardous waste incinerators.	895.34
Acid-Base	Analysis of the basic properties of acid-base is then naturalized to have a neutral pH value before collecting and disposing by cement or hazardous waste incinerators.	948.94
High-Toxic	Analysis of basic physical and chemical properties. After that, de-toxic is performed according to each type of chemical before collecting and disposing by cement kilns or hazardous waste kilns.	139.70
Heavy Metal	Analysis of primary physical and chemical properties afterwards improves the quality of waste by precipitation and transports it away by cement or hazardous waste incinerators.	159.80
Solid Waste	Preliminary analysis according to physical and chemical characteristics is then conducted as appropriate, conducting pre-treatment waste before collecting it for disposal by cement or hazardous waste incinerator.	330.52



Type of Waste	Waste Management	Quantities (Kg.)
Unknown	The solution is sorted by physical and chemical characteristics, then sorted and grouped to determine the appropriate management guidelines. After that, pre-treatment, recycle and dispose of the sediment by cement or hazardous waste incinerator.	304.00
Contaminated Container	Complete the chemical transfer from the container. Then, empty containers are washed by storing waste from washing containers, collecting incinerators at cement factory kilns, and collecting empty containers to dispose of hazardous waste kilns.	854.96
Total		3,633.26

So I learned to know and thank you for giving me the opportunity to serve.

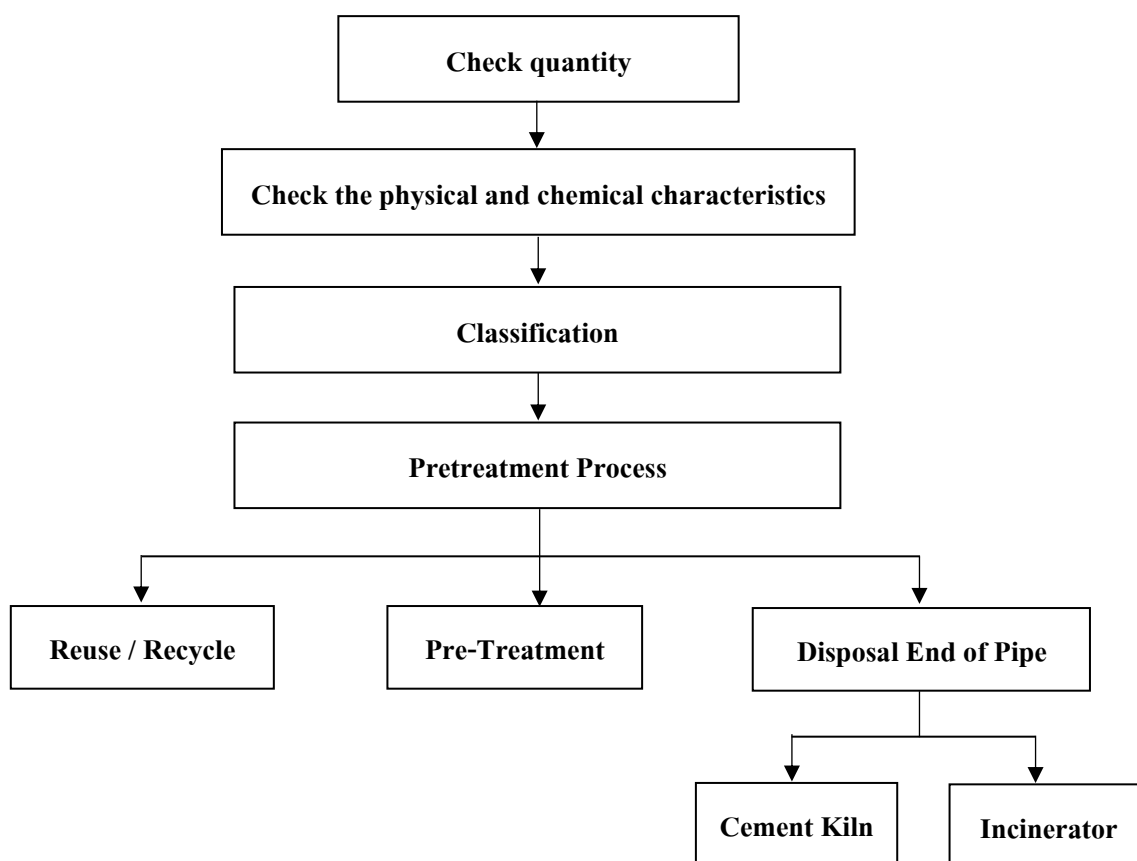


Your Sincerely,  
Suphattra Rodsai  
Sale Support

## Attachment

### Laboratory Waste Management Procedures

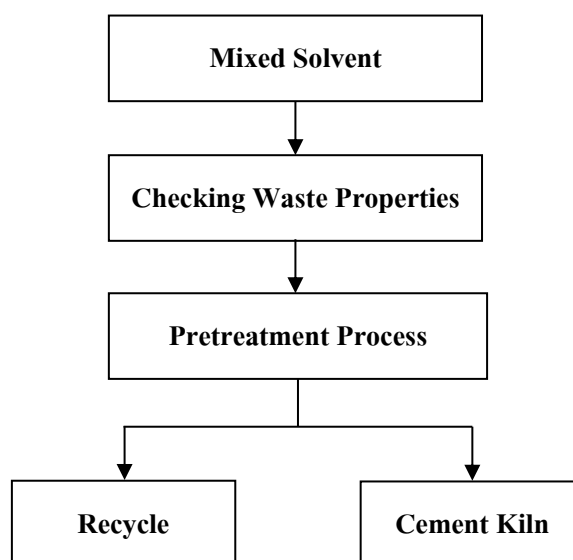
Proper and safe disposal of Lab Waste starts from various laboratory units that will send the waste to be processed, the waste must be listed and classified according to the type as recommended by the company in order to be able to proceed properly. When customer-company agreement has been completed, the waste will be picked up by our truck. The waste will be packed separately in the cardboard boxes according to the type of waste. Once the waste is received from customer, it is brought into a management system which has multiple steps and processes. At the end, according to the flow diagram as follows.



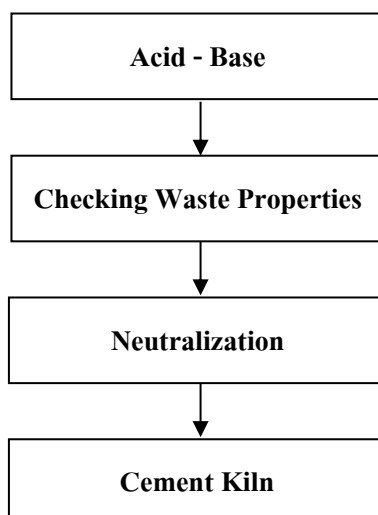
## Attachment

### Flowchart of Disposal Process

#### 1. Mixed Solvent Disposal Process (Hydrocarbon, Halogen, Inorganic)

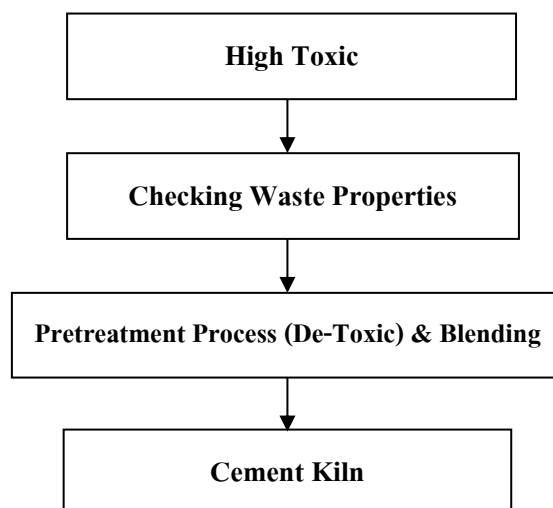


#### 2. Acid - Base Disposal Process

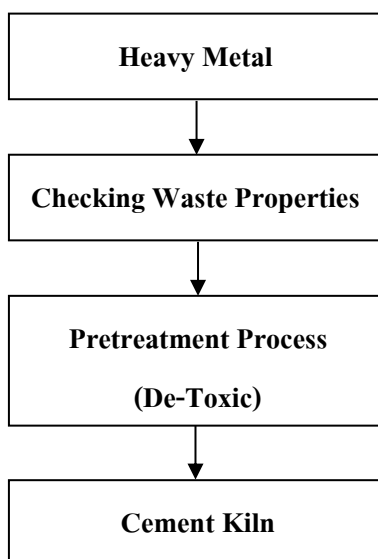


## Attachment

### 3. High Toxic Disposal Process

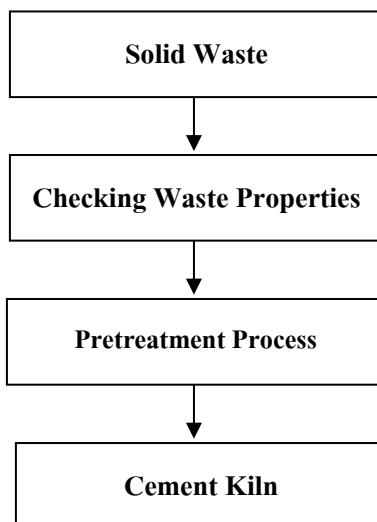


### 4. Heavy Metal Disposal Process

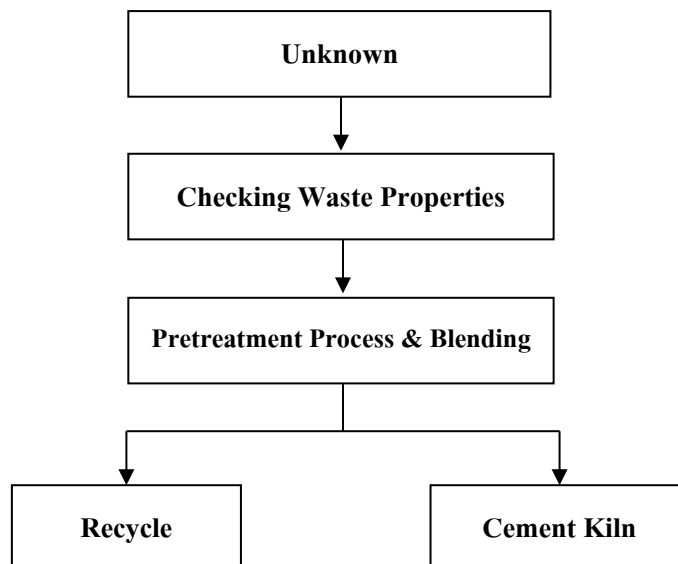


## Attachment

### 5. Solid Waste Disposal Process



### 6. Unknown Disposal Process



Attachment

7. Contaminated Materials & Containers Disposal Process

